

Build Instruction for TopRC 2m PC21

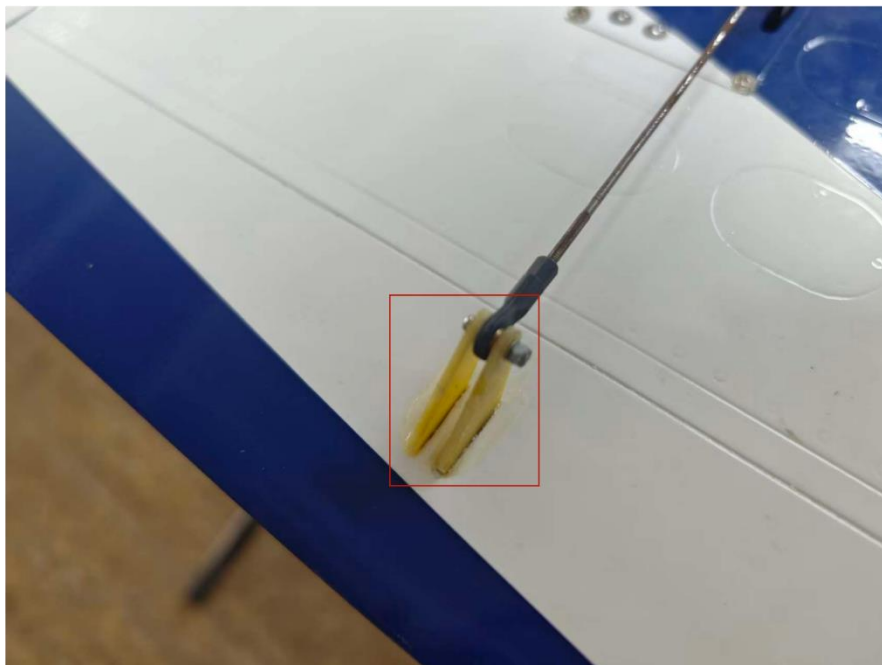
Servos Needed (not included):

Standard servos **x4** for ailerons and flaps

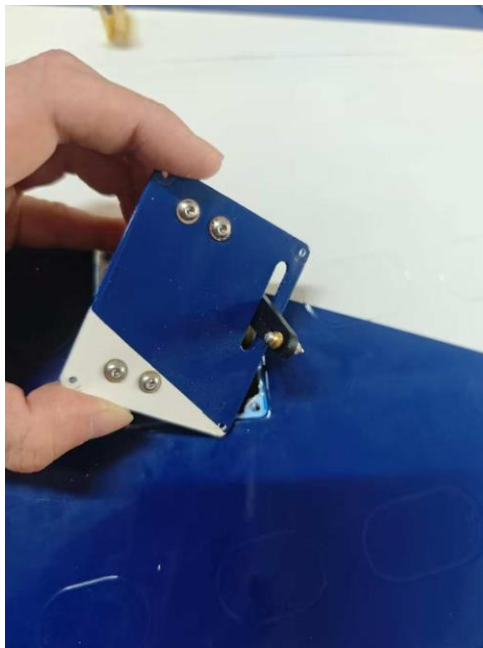
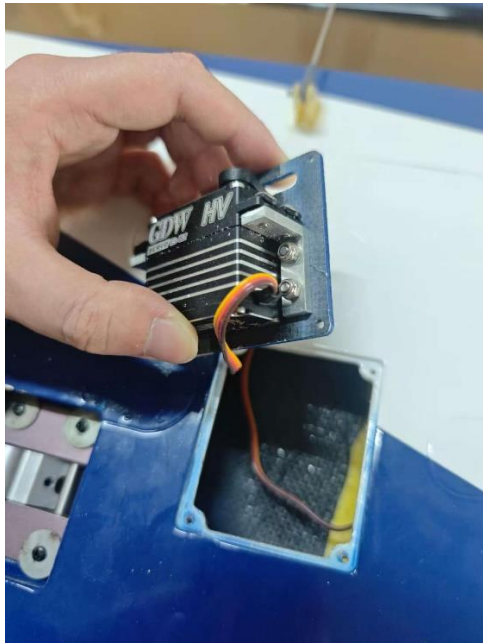
Medium servos **x3** for elevators and rudder

Mini servo **x1** for steering wheel

1. Glue control horns to all control surfaces (ailerons, flaps, elevators, rudder) tilting towards the servos.



2. Install servos using L arms onto servo covers.



3. Install servos with servo covers for ailerons, flaps, elevators and rudder.



4. Adjust and connect control horns to servo arms for ailerons, flaps, elevators and rudder using ball joints and threaded pushrods with different lengths:

Flaps:



Ailerons:



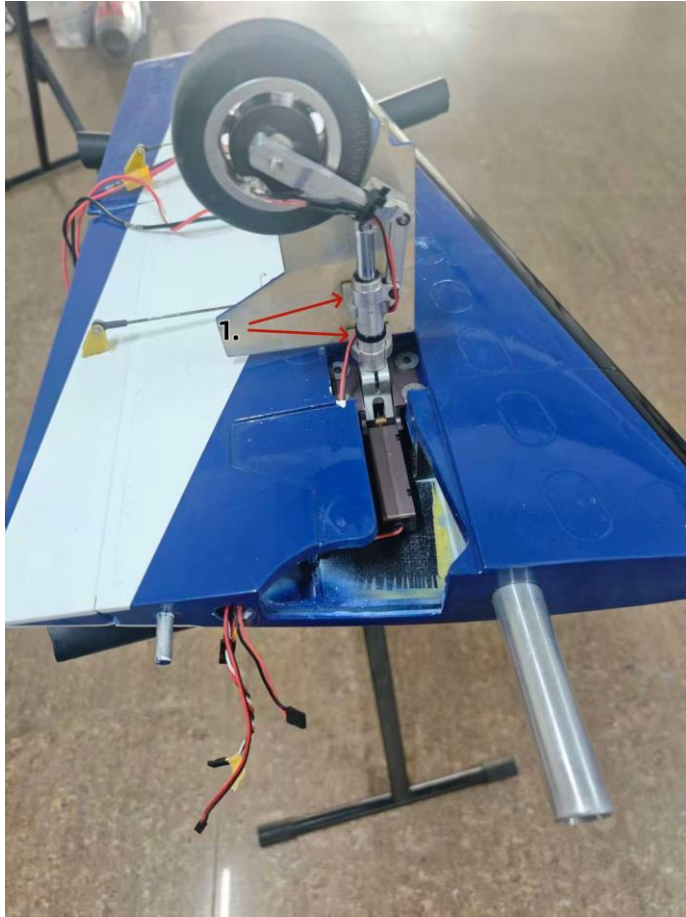
Elevators:



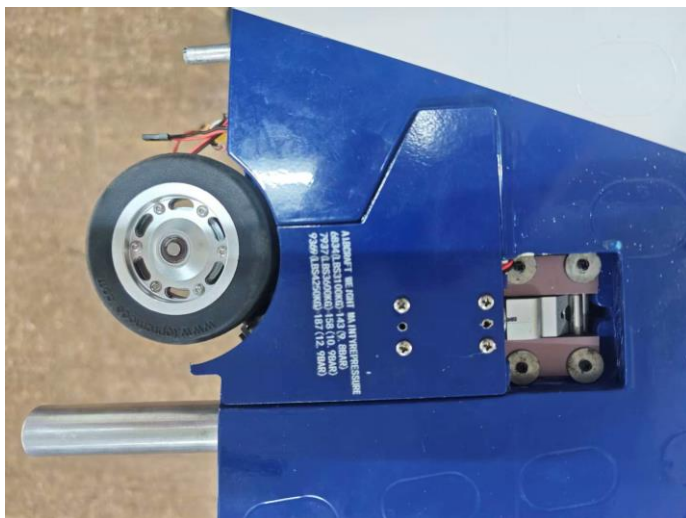
Rudder:



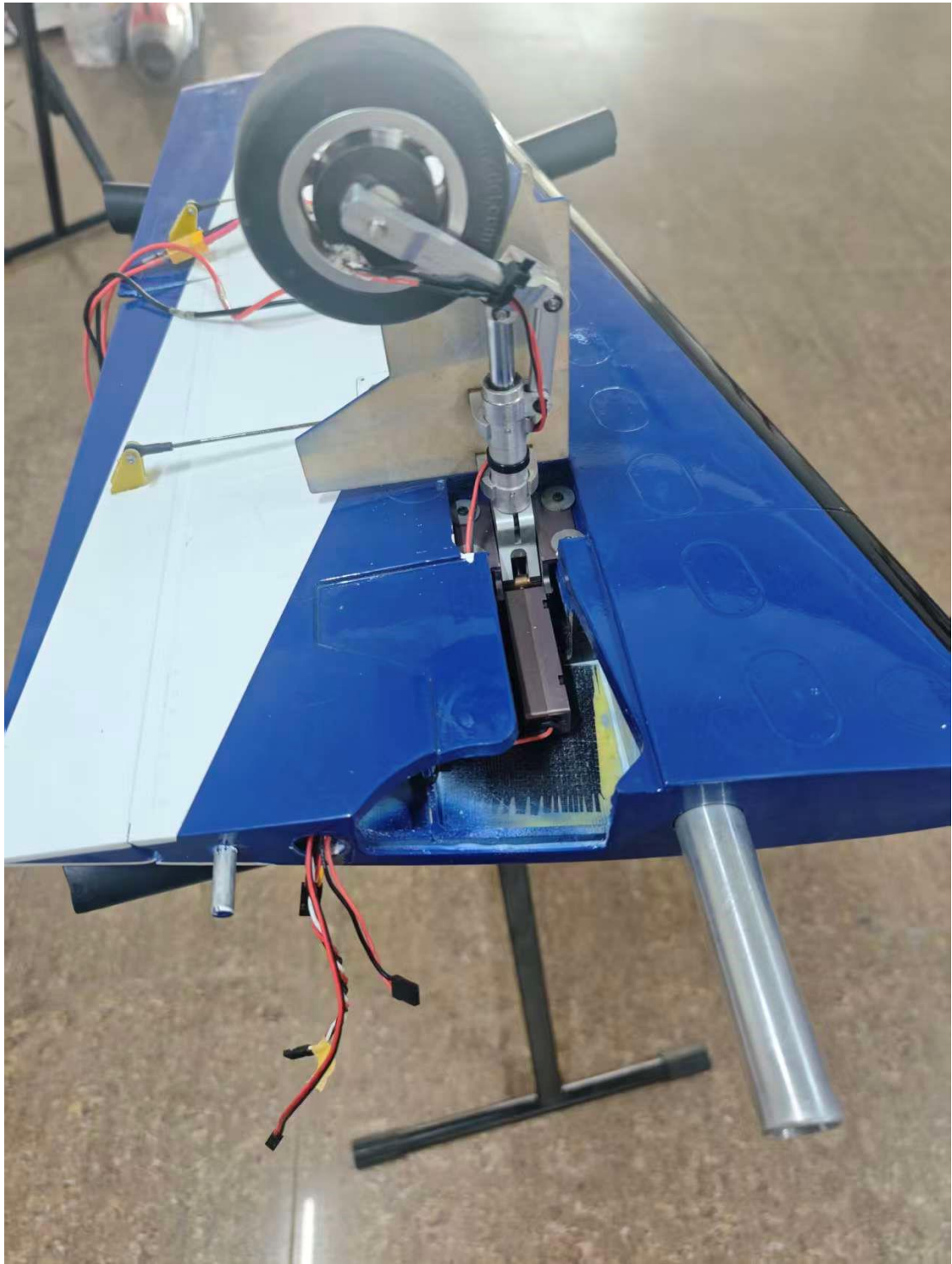
5. Slide in main landing gear cover bases (1.) on landing gear shaft, insert landing gear into electric main retract and tighten the clamp screw after adjusting the main wheel direction.



6. Install the main retracts onto the main wings with retracts closed for alignment, and install the main landing gear covers.



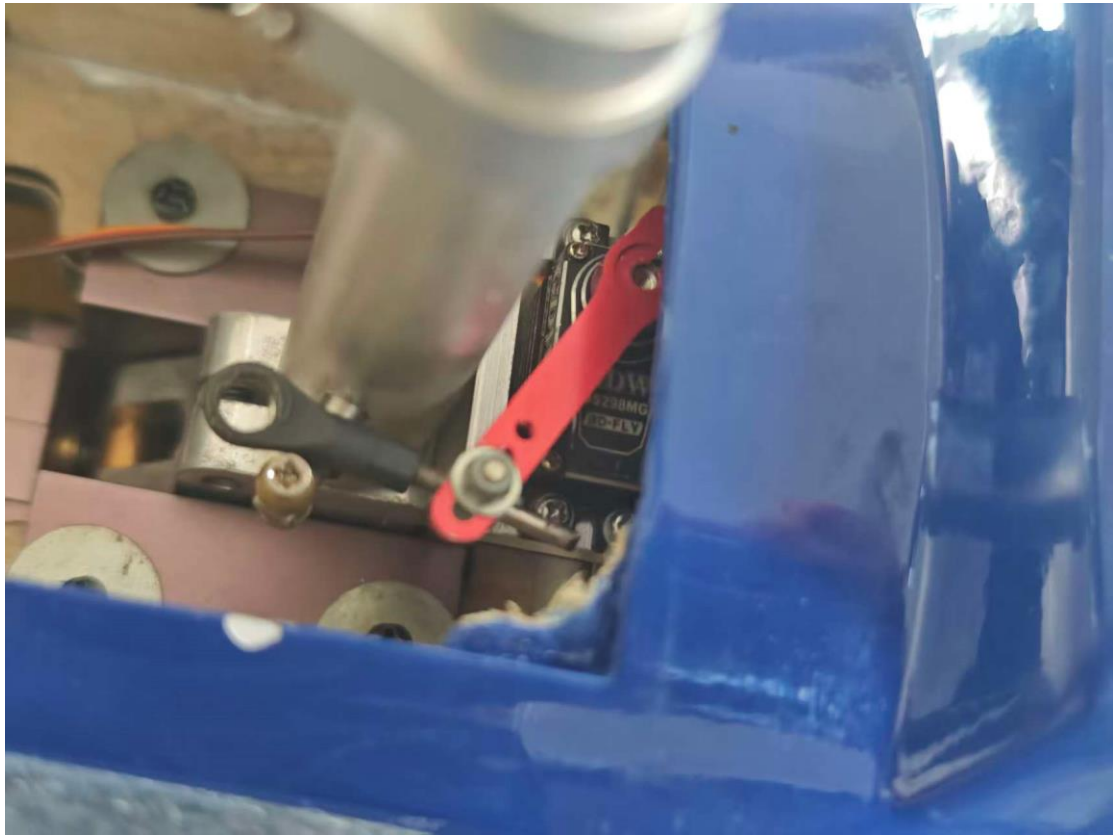
7. Clear up the wiring as suggested.



8. Install the horizontal stabilizers onto the fuselage, with one side glued to the carbon rod and the other side fixed to the carbon rod with a tapping screw.



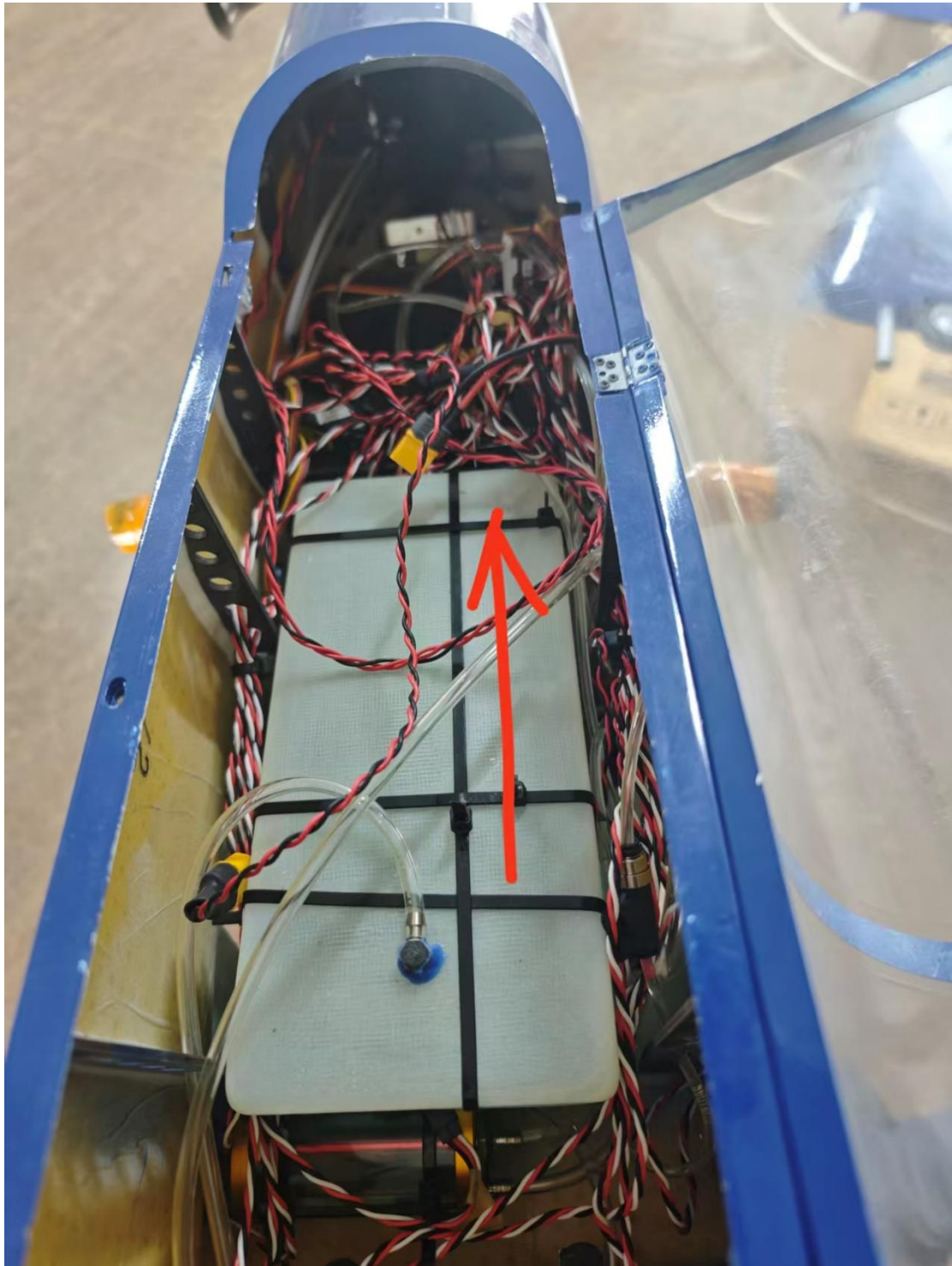
9. Install the steering servo onto the nose retract before mounting the nose retract onto the fuselage.



10. Install the nose retract onto the fuselage using tapping screws. Adjust the door pushrods so that the doors open and close as the nose retract opens and closes.



11. Install the main fuel tank with the thinner side facing forward.



12. Install the engine. Here demonstrate the case for Kingtech 30 Turboprop engine. After the engine is installed, install the propeller (not included), spinner and exhaust pipes (not included).



13. Install the main wings with retracts out onto the fuselage and you are ready to tune your plane.